



## NOAA FISHERIES

Southeast Regional Office  
263 13th Ave S  
Saint Petersburg, FL 33701

# CATCH UP ON CATCH SHARES

Sign up to receive this newsletter online on the IFQ Homepage: [portal.southeast.fisheries.noaa.gov/cs](http://portal.southeast.fisheries.noaa.gov/cs)





*Muralist, Leo Gomez, celebrates heritage, energizes the community, and honors fishers: his story through a hand-painted lens.*

CELEBRATING  
40 OF FISHermen  
Years FRIENDS  
FAMILY AND  
GREAT SEAFOOD



**Leo** Gomez is an artist who has designed several murals and large-scale signs for IFQ fish houses and restaurants in the Tarpon Spring community. His work honors fishermen, family, and fresh seafood through bold and colorful artworks that reflect on the heritage of family fishing businesses.

Leo has curated a visual celebration of how fisheries have impacted a community over time.

It's a two-way street - the artist has to learn about the fish, the business, and the community, before he can interpret the message and translate it through his brush. Through his lens, he is visually telling a story and sharing a feeling. Leo's style gives a nostalgic feel, while the bright colors convey a new energy to the space. One mural, features a boldly painted white pelican, red grouper, mullet, seagrass, and coral, while another wall features a

*The murals honor the fishermen and show love for the*



# SOMETHING DIFFERENT

*Using a fresh coat of paint to tell a story.*



Article by Catherine Bruger  
Photography by McNeille Photography

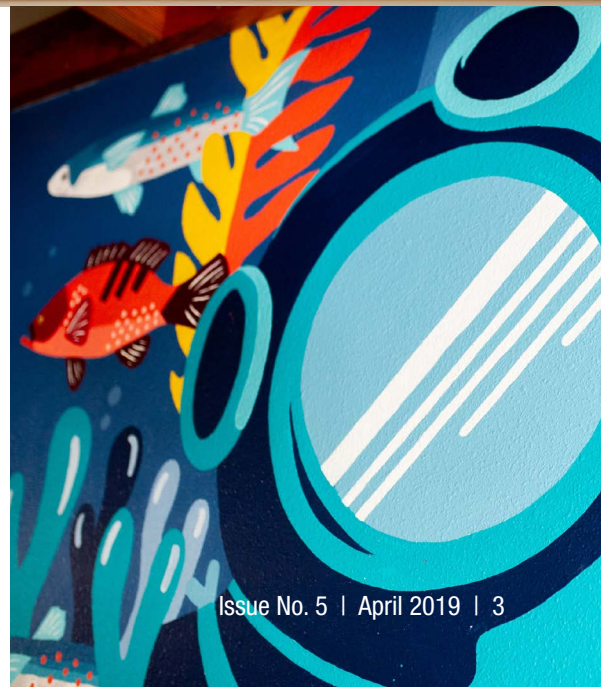
vintage scuba diver helmet, giving presence to the strong history of sponge divers in Tarpon Springs.

The fishing industry affects fishers, fish houses, and also the surrounding communities. There are thousands of consumers, chefs, and people like Leo, who want to know about seafood, our connection with the marine environment. Leo's artwork helps us to learn the story of how that interaction has changed over time.

*By sharing this message, we hope to empower the community and continue to spread the message of the importance of supporting small local businesses and sustainable seafood.*  
— Leo

To learn more about Leo's work:  
<http://leogomezstudio.com>

*e wild sea life. — Leo*



## IFQ PRICE SNAPSHOT

Below you will find [preliminary 2018](#) price summaries for each species and share category in the Gulf Catch Shares programs.

Share Category	Species	Share Price (per 1lb equivalent)	Allocation Price (per/lb)	Ex-Vessel Price
Red Snapper	Red snapper	\$33.91	\$3.48	\$4.89
Deep-water Grouper	Snowy grouper	\$10.20	\$1.00	\$4.69
	Speckled hind			\$4.59
	Warsaw grouper			\$4.03
	Yellowedge grouper			\$4.91
Gag	Gag	\$10.79	\$0.98	\$5.50
			Gag multi-use: \$1.08	
Other Shallow Water Grouper	Black grouper	\$5.34	\$0.58	\$5.36
	Scamp			\$5.24
	Yellowfin grouper			\$3.89
	Yellowmouth grouper			\$4.03
Red Grouper	Red grouper	\$4.02	\$0.58	\$4.58
			Red grouper multi-use: \$0.66	
Tilefish	Blueline tilefish	\$10.84	\$0.62	\$1.97
	Golden tilefish			\$2.95
	Goldface tilefish			\$2.13

## HOW ARE IFQ PRICE DATA USED?

One goal of the IFQ programs is to increase profitability in the fishery. Price data can be one of the indicators of the programs' success; therefore, accurate reporting of price information is crucial to the evaluation of the program. Share, allocation, and ex-vessel prices are just one aspect to aid in determining the economic value of a fishery.

## WHAT IS AN EQUIVALENT POUND?

When a share percentage is converted to allocation, the exact amount depends on the quota at that point in time. This converted value is called an equivalent pound, as the same share percentage may equal a different amount if the quota were to change.

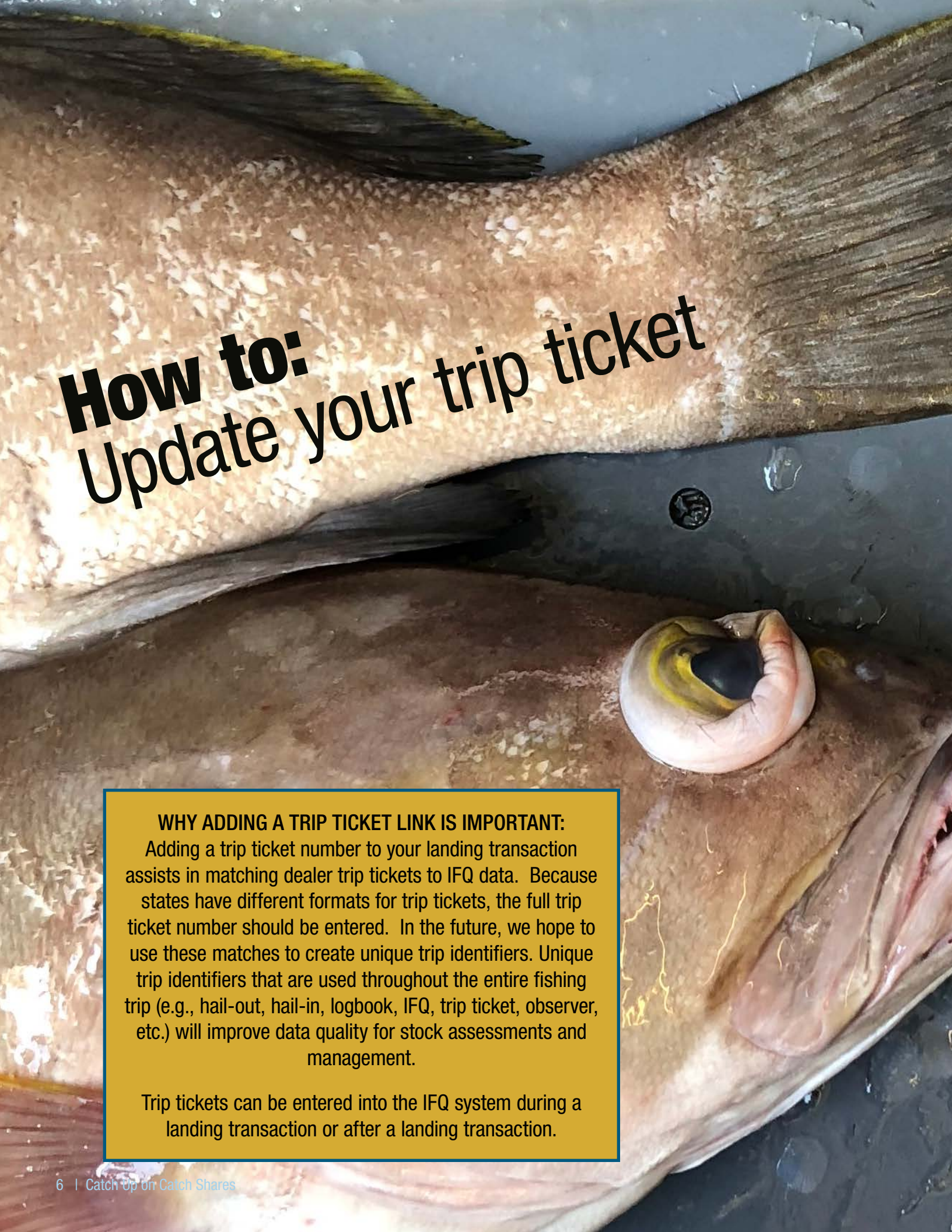
### EXAMPLE:

On Jan 1, 2019, 0.015841% of RS shares = 1000 equivalent pounds

On April 4, 2019, (after the quota increase) 0.015841% of RS shares = 1099 equivalent pounds







# How to: Update your trip ticket

## WHY ADDING A TRIP TICKET LINK IS IMPORTANT:

Adding a trip ticket number to your landing transaction assists in matching dealer trip tickets to IFQ data. Because states have different formats for trip tickets, the full trip ticket number should be entered. In the future, we hope to use these matches to create unique trip identifiers. Unique trip identifiers that are used throughout the entire fishing trip (e.g., hail-out, hail-in, logbook, IFQ, trip ticket, observer, etc.) will improve data quality for stock assessments and management.

Trip tickets can be entered into the IFQ system during a landing transaction or after a landing transaction.



NOAA Home | Weather | Oceans | Fisheries | Charting | Satellites | Climate | Research | Coasts | Careers | Privacy

**NOAA FISHERIES** | **SERO Catch Shares Program**

NATIONAL OCEANIC AND ATMOSPHERIC ADMINISTRATION

OPERATIONAL v4.0.4.2

Home Cost Recovery Landings Landing Locations Notifications Endorsement Messages My Account Log Out

**Step 1 - Enter Pounds and Price**

Species	Code	Weight (lb.)	Total Price
YELLOWEDGE GROUPE			0.00
SNOWY GROUPE	DWG	0	0.00
WARSAW GROUPE	DWG	0	0.00
SPECKLED HIND	DWG	0	0.00
RED GROUPE	RED GR	0	0.00
GAG GROUPE	GAG	0	0.00
BLACK GROUPE	OTHER SWG	0	0.00
SCAMP	OTHER SWG	0	0.00
YELLOWMOUTH GROUPE	OTHER SWG	0	0.00
YELLOWFIN GROUPE	OTHER SWG	0	0.00
GOLDFACE TILEFISH	TILE	0	0.00
BLUELINE TILEFISH (GRAY)	TILE	0	0.00
GOLDEN TILEFISH	TILE	0	0.00
RED SNAPPER	RED SNAPPER	0	0.00

**Step 2 - Select a Facility**

Name	City	State

**Step 3 - Search for and select a Vessel Account**

Search Vessels

UserID	Vessel Name and Number

**Step 4 - Select a Notification Confirmation**

Date Expected	Notification Confirmation

**Step 5 - Enter Trip Ticket Number (Optional)**

Ticket

**Step 6 - Click the Continue button**

Continue Reset

Scroll down to see summary information

Date Thursday, 2/27/2014 9:42 AM

Pounds

Price

Fee

Value

### DURING A LANDING TRANSACTION:

If you have completed your trip ticket at the time you complete your landing transaction, you can enter the trip ticket number in Step 5 of the landing transaction.

NOAA Home | Weather | Oceans | Fisheries | Charting | Satellites | Climate | Research | Coasts | Careers | Privacy

**NOAA FISHERIES** | **SERO Catch Shares Program**

NATIONAL OCEANIC AND ATMOSPHERIC ADMINISTRATION

OPERATIONAL v4.0.4.2

Home Cost Recovery Landings Landing Locations Notifications Endorsement Messages My Account Log Out

**Update Trip Ticket**

Search:

Date

Vessel	Landing Conf.	Trip Ticket

Use this form to update the trip ticket for the selected landing:

Landing:

Trip Ticket:

Update Trip Ticket: Submit

### AFTER A LANDING TRANSACTION:

Under the Landings Menu, you can select Update Trip Ticket. Select the year of the landing transaction then the trip from the table to make a change. The Landing field will populate with the Landing Transaction Confirmation Number. You can add or edit the Trip Ticket number then select Submit to save.



# DATES & RESOURCES

[IFQ WEBSITE](#)

[IFQ SHAREHOLDERS](#)

[PERMITS](#)

[SOUTHEAST REGIONAL OFFICE LAPPs BRANCH](#)

[SOUTHEAST REGION ACL MONITORING](#)

[ELECTRONIC CODE OF FEDERAL REGISTER](#)

[GULF COUNCIL](#)

[GULF STATES COMMISSION](#)

[WRECKFISH SHAREHOLDERS](#)

[FISHERY BULLETINS](#)

APR  
30

April 2019  
IFQ Cost Recovery Fees due

MAY  
9

May 2019 [Scientific & Statistical  
Committee Meeting \(SSC\)](#)  
Tampa, FL

JUNE  
3-6

June 2019 [Gulf of Mexico Fishery  
Management Council](#) Meeting  
Miramar Beach, FL

Like what you see?  
Do you have suggested topics to feature?

Please send feedback to  
[NMFS.SER.CatchShare@noaa.gov](mailto:NMFS.SER.CatchShare@noaa.gov)  
or call 866-425-7627 (option 2).

